

### Pinch bail safety prong.

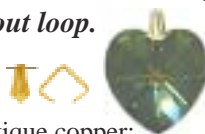
**5235FD** 9mm pinch bail with safety prong. Insert prong into pendant, then through hole in back plate. Turn prong to secure. Silver or gold. **\$13.00/100; \$1.95/10**



### Bails

#### Pinch bails without loop.

**8707FD** 5mm.  
Brass: **\$9.00/100**  
Sterling plate or antique copper: **\$13.00/100; \$1.95/10**  
18k plate: **\$15.00/100; \$2.25/10**



#### Glue on bails can be used to convert stones to pendants.

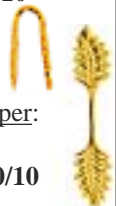
**4692FD** 10x6 triangle.  
Brass: **\$17.00/100; \$2.55/10**  
Sterling plate: **\$10.00/50; \$3.00/10**  
18k plate: **\$12.00/50; \$3.60/10**



**3411FD** 11x7 double stemmed leaf bail.  
Coppery brass: **\$14.00/50; \$4.20/10**  
Sterling plate: **\$16.00/50; \$4.80/10**  
18k plate: **\$18.00/50; \$5.40/10**



**10017FD** 8x5 leaf.  
Brass: **\$13.00/100; \$1.95/10**  
Sterling plate or antique copper: **\$16.00/100; \$2.40/10**  
18k plate: **\$18.00/100; \$2.70/10**



**7627FD** 10x5.  
Silver: **\$16.00/100; \$2.40/10**  
Gold: **\$11.00/50; \$3.30/10**



#### Wraparound bail pinches open to slip through hanging hole of most charms.

**9830FD** 8x3 sterling silver.  
\$15.00/50; \$4.50/10



**8704FD** 6x2.  
Brass: **\$10.00/100**  
Sterling silver or antique copper: **\$13.00/100; \$1.95/10**  
18k plate: **\$15.00/100; \$2.25/10**



**8705FD** 8x3.  
Brass: **\$12.00/100; \$1.80/10**  
Silver or antiqued copper: **\$15.00/100; \$2.25/10**  
18k plate: **\$17.00/100; \$2.55/10**



**8706FD** 10x4.  
Brass: **\$14.00/100; \$2.10/10**  
Silver or antiqued copper: **\$17.00/100; \$2.55/10**  
18k plate: **\$10.00/50; \$3.00/10**



**10163FD** Sterling silver single leaf bail cements to the back of a glass stone, showing only the large hole loop.  
Small: **\$16.00/10; \$2.40 ea**  
Medium: **\$22.00/10; \$3.30 ea**  
Large: **\$58.00/10; \$8.70 ea**



**10162FD** Antique sterling silver pinch bail works with thicker pendants like 9600GP. **\$28.00/10; \$4.20 ea**



### Pinch bail with loop.

**8709FD** 8mm.  
Brass: **\$11.00/100; \$1.65/10**  
Sterling plate: **\$14.00/100; \$2.10/10**  
18k plate: **\$16.00/100; \$2.40/10**



**8710FD** 9mm.  
Brass: **\$13.00/100; \$1.95/10**  
Sterling plate: **\$16.00/100; \$2.40/10**  
18k plate: **\$18.00/100; \$2.70/10**



### Swivel Connectors

Swivel connectors have loops with headpin ends that move freely inside shapes so attached dangles can swing and turn with motion.

**3498FD** 13mm  
Brass: **\$10.00/100; \$1.50/10**  
Sterling plate: **\$12.00/100; \$1.80/10**  
18k plate: **\$14.00/100; \$2.10/10**



**3499FD** 16mm.  
Brass: **\$12.00/100; 1.80/10**  
Sterling plate: **\$14.00/100; \$2.10/10**  
18k plate: **\$16.00/100; \$2.40/10**



**3500FD** 20mm  
Brass: **\$14.00/100; \$2.10/10**  
Sterling plate: **\$16.00/100; \$2.40/10**  
18k plate: **\$19.00/100; \$2.85/10**



**3501FD** 27mm.  
Brass: **\$12.00/50; \$3.60/10**  
Sterling plate: **\$14.00/50; \$4.20/10**  
18k plate: **\$18.00/50; \$5.40/10**



**6367FD** 24mm stainless steel chain with 3mm balls.  
**\$33.00/50; \$9.90/10; \$1.50 ea**



**6368FD** Loops extend 3 ways from center ring 12mm overall.  
Brass: **\$11.00/50; \$3.30/10**  
Sterling plate: **\$13.00/50; \$3.90/10**  
18 plate: **\$15.00/50; \$4.50/10**

