

Handbag Frames

Unless otherwise noted, all are available in Silver or Gold.



7173FD 2.25 inch (Gold only). Smooth with fancy looped inner edge. **\$14.00 ea**



7171FD 2 inch. Stamped decorative pattern. **\$19.00 ea**



6853FD 2.2 inch. Stamped decorative pattern. **\$16.00 ea**



8307FD Vintage style expandable purse frame has hinged round lid. **23mm** (expands to 3 inches): **\$69.00 ea**
33mm (expands to 4 inches): **\$78.00 ea**



8513FD 2 inch. Antique finish with dot and flowing line detail. **\$28.00 ea**



7174FD 2.3 inch. Smooth with looped inner edge. *Silver only.* **\$16.00 ea**



8514FD 2.4 inch. Antique finish with dot and flowing line detail. **\$32.00 ea**



7176FD 2.5 inch. Finely textured scallop form. **\$19.00 ea**

Instruction Books
Page BK-5, **Books** catalog section features a variety of books with instructions on making new and old technique beaded bags.



8515FD *New color:* bright gold. 2.75 inch ornate frame has floral detail. Also available in bright silver. **\$35.00 ea**

See Pgs. FD-13 through FD-15 for different styles of chain, many of which can be used for handbag frame handles.



5283FD 2.6 inch scallop with stamped decorative design. **\$19.00 ea**

Unless otherwise specified, **photographs are actual size.**



more Handbag Frames . . .



8140FD 4 inch ornate pagoda style.
Silver plate: \$65.00 ea
Gold plate: \$70.00 ea

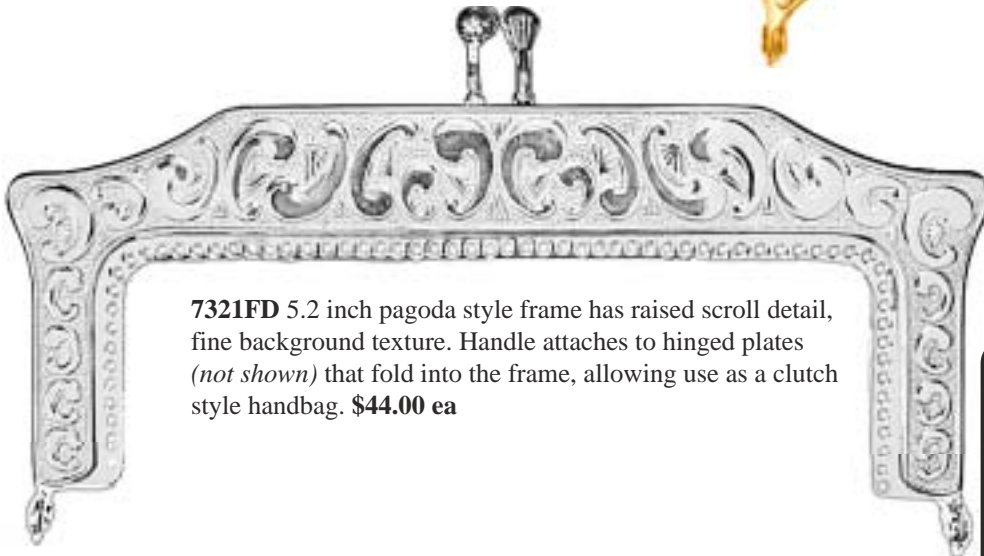


7320FD 3.5 inch Victorian style frame has fine surface texture. \$28.00 ea



7319FD 3.5 inch scalloped frame has fine crosshatched texture. \$28.00 ea

The lower edges of our hinged frames have holes so beadwork, leather, needlepoint or knitting may be stitched to the frame. Except as noted, all are available in Silver or Gold.




7321FD 5.2 inch pagoda style frame has raised scroll detail, fine background texture. Handle attaches to hinged plates (not shown) that fold into the frame, allowing use as a clutch style handbag. \$44.00 ea

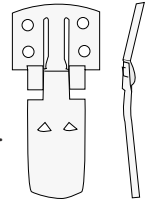
You may wish to inquire about other vintage style frames we have which are not shown here.

Unless specified, dimensions are in millimeters. One inch = 25.4 mm. Illustrations or photographs are actual size.

Shoe Clip



3269FD Silver hinged shoe clip has 11x8 pad. Illustrated with 5341GS, Pg. GS-18, Glass Stones catalog section. \$12.00/50; \$3.60/10




ORNAMENTAL RESOURCES, INC.

24 hour Web site: ornabead.com

Weekday Hours:
 Eastern: 11AM - 7PM
 Central: 10AM - 6PM
 Mountain: 9AM - 5PM
 Pacific: 8AM - 4PM
 GMT: 4PM -MIDNT

Saturday & Sunday Hours:
 Noon to 4 PM

Orders (outside 303 area code):
 800-876-6762

Orders (within 303 area code):
 303-567-2222

24 hour FAX: 303-567-4245

P.O. Box 3303 • 1427 Miner St.
Idaho Springs, CO 80452